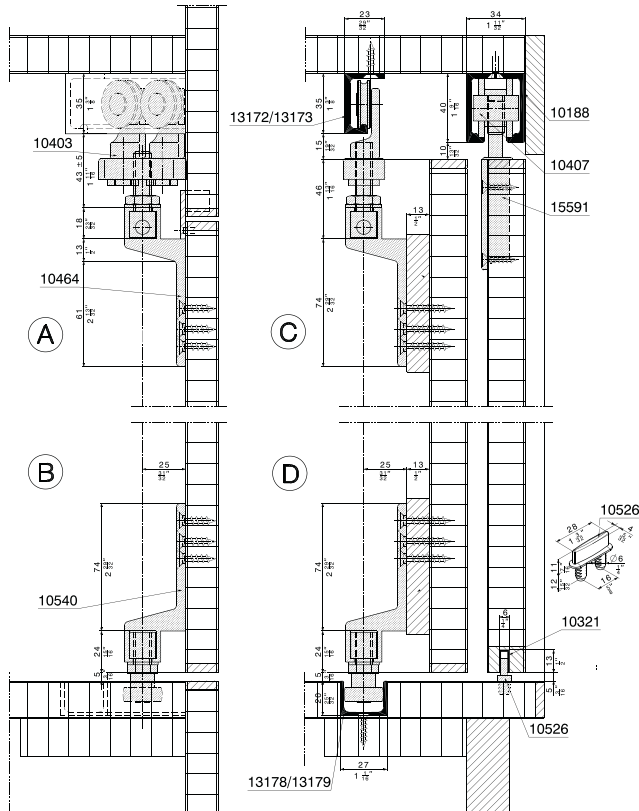


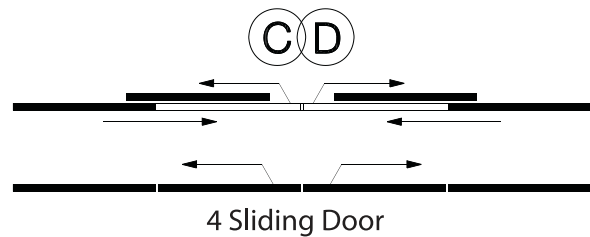
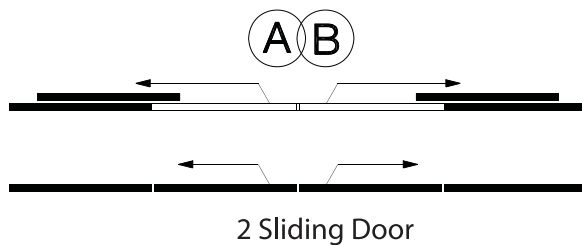
HAWA 220 PLANFRONT 70

Hardware system for Flush-mounted partition doors/wardrobe doors with a panel weight up to 70kg(Right & Left Version).



HAWA 220 PLANFRONT 70

The HAWA-220 Planfront 70 offers countless interior design possibilities. Sliding elements may be flush-mounted to a wainscot or cupboard. Projection screens or media walls may be hidden away without the slightest difficulty. The sliding doors can be moved parallel behind a fixed front. The doors can be locked using a standard bar bolt lock. The sliding elements run in the top track and are guided in a bottom guide channel.



Component Set

Item Code	Item Description
29.13233	HAWA 220 PLANFRONT 70 (1 PANEL) RIGHT VERSION 40CM-150CM WIDTH
29.13234	HAWA 220 PLANFRONT 70 (1 PANEL) LEFT VERSION 40CM-150CM WIDTH

Max Door Weight : 70kg
 Door Width: 400 - 1500mm
 Door Thickness : 19-45mm